



Sangawar Pneumatics

We remove the unwanted

FILTER TROLLEY - INLINE FILTER - FILTRATION SYSTEMS

☐ SANGAWAR FILTRATION TROLLEY

Application of Filtration Trolley

Fluid before putting in service.

Transferring Fluid from drums to reservoirs & filtering the same while transferring.

Conditioning the existing Fluid of the system by using as off - line filtration system.

Can be used for Mineral Oils, Water Glycols, Phosphate Ester & Synthetic Fluids.

Unique Features of Sangawar Filtration Trolley

Light weight & portable within built Drip Tray for collection of spilled Oil.

Rugged construction, Spares are easily available.

Spin on Bowl for easy removal for replacement of Element.

Suction Strainer provider for pump protection from catastrophic failures.

Filtration Trolley fitted with DOL Starter, 10 Meter electric cord & 2.5 Meter Suction & Delivery Hoses as standard.

Custom Built canalso be manufactured as per customers flow, pressure, process & filtration (in microns) requirement.

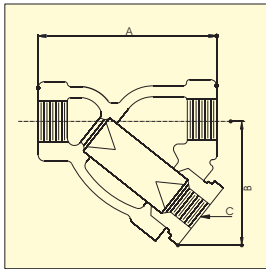


**COMPLETE
SOLUTION
IN FILTRATION**

INLINE FILTERS & FILTRATION SYSTEMS

Y - TYPE STRAINER

SCREWED END



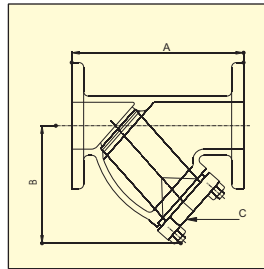
Sizes : ½" to 2"

End Connection : Screwed, Socket weld, Butt weld.

Screen : Stainless Steel, Brass, Monel etc.

Material : Carbon Steel, S. Steel, Forged

FLANGED END



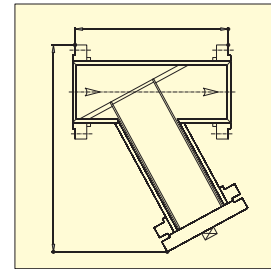
Sizes : ½" to 10"

End Connection : Flanged as per ANSI B 16.5, BS or DIN standard, Buttweld.

Screen : Stainless Steel, Brass, Monel etc.

Material : Carbon Steel, S. Steel

FABRICATED DESIGN

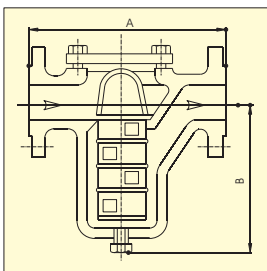


Sizes : ½" to 24" and above

Can be designed to suit customer requirement of free flow area and pressure drop.

BASKET TYPE STRAINER

CAST DESIGN

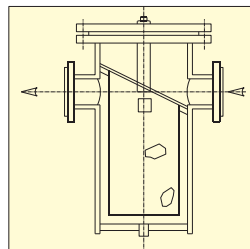


Sizes : ½" to 6"

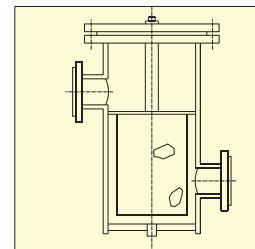
End Connection : Flanged End, Screwed, Socket weld

Material : Cast Carbon Steel, S. Steel.

FABRICATED DESIGN



IN LINE



OFF LINE

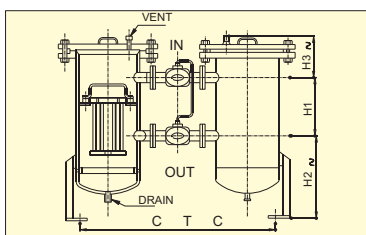
Sizes : ½" to 24" and above

End Connection : Flanged as per ANSI B 16.5, BS or DIN standard, Buttweld.

Material : Carbon Steel, S. Steel.

Screen : Stainless Steel, Brass, Monel etc.

DUPLEX TYPE STRAINERS / FILTERS

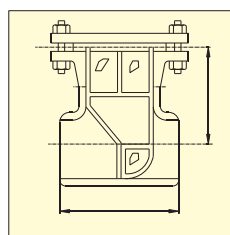


Sizes : 1" to 12"

Material : Carbon Steel, S. Steel.

Change over valve : 3 way Ball valve. Valve can be supplied with Automatic or manually operated

TEE TYPE STRAINERS



Sizes : 1" to 24" and above

Material : Carbon Steel, S. Steel (Forged / Fabricated)

End conn : Buttweld, Flanged End.

Filter Element : Stainless Steel.

OTHER FILTER / STRAINERS :

- Cartridge Filters
- Self Cleaning Filter - Manual / Auto
- Automatic Backwash Filter
- Temporary Conical Strainers
- Multi Element Filters
- Concentric Filters
- Custom Designed
- Special Types of Filters



Sangawar Pneumatics

B-115, Kalika Darshan, Parulekar Marg,
Opp. Bhavani Shankar Road, Dadar (West),
Mumbai - 400 028. INDIA. Tel. No.: 91-022-4221603

Regional Representative :